

CHILDREN AND EDUCATION SCRUTINY SUB-COMMITTEE

Tuesday, 15 December 2020 at 5.30 p.m.

Online 'Virtual' Meeting - <https://towerhamlets.public-i.tv/core/portal/home>

PRESENTATION SLIDES

This meeting is open to the public to attend.

Contact for further enquiries:

Democratic Services

1st Floor, Town Hall, Mulberry Place, 5 Clove Crescent, E14 2BG

Tel: 020 7364 0842

E-mail: farhana.zia@towerhamlets.gov.uk

Web: <http://www.towerhamlets.gov.uk>

Scan this code for
an electronic
agenda:



For further information including the Membership of this body and public information, see the main agenda.

**PAGE
NUMBER(S)**

6 .2 Food provision for vulnerable families

3 - 18

Presentation slides

6 .3 Tower Hamlets Safeguarding Partnership

19 - 24

Presentation slides

Tackling Poverty

Impact of Covid-19 on families, and what is being done to support them



Contents



The data:

1. Universal Credit
2. Housing Benefit and Council Tax Reduction
3. Households out of work (with children)
4. Relative poverty (with children)
5. Arrears

What we're doing:

6. Christmas
7. February Half Term
8. Holiday Activities and Food
9. VCS hub
10. Resident Support Scheme
11. Self-isolation payments
12. Outreach staff



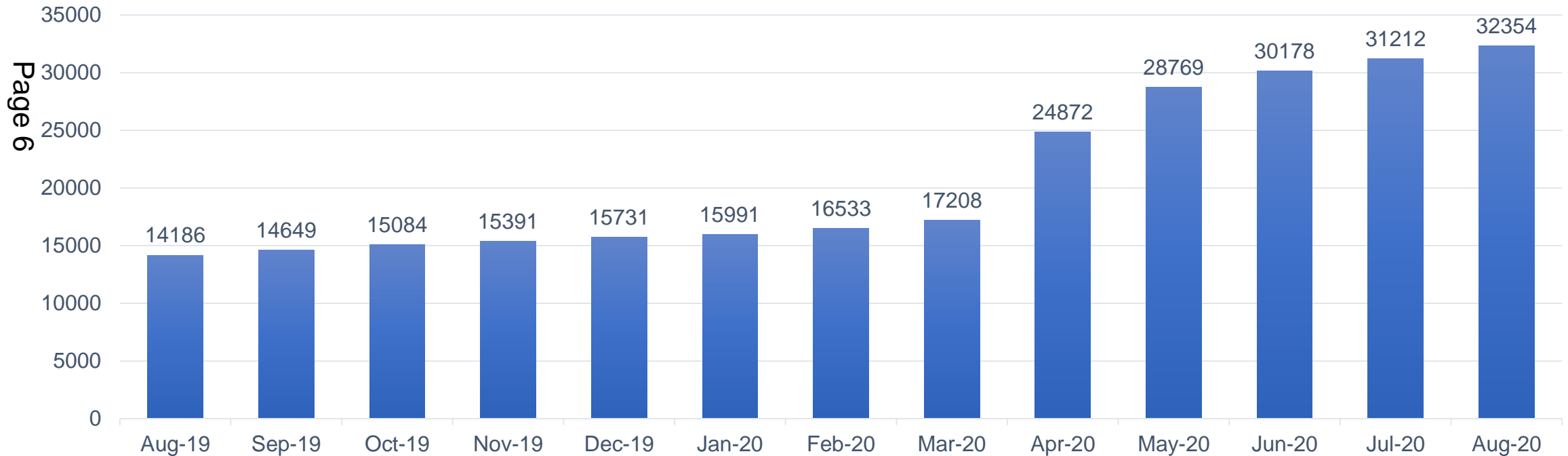
Looking at the data



1. Universal Credit



Number of households claiming Universal Credit in Tower Hamlets



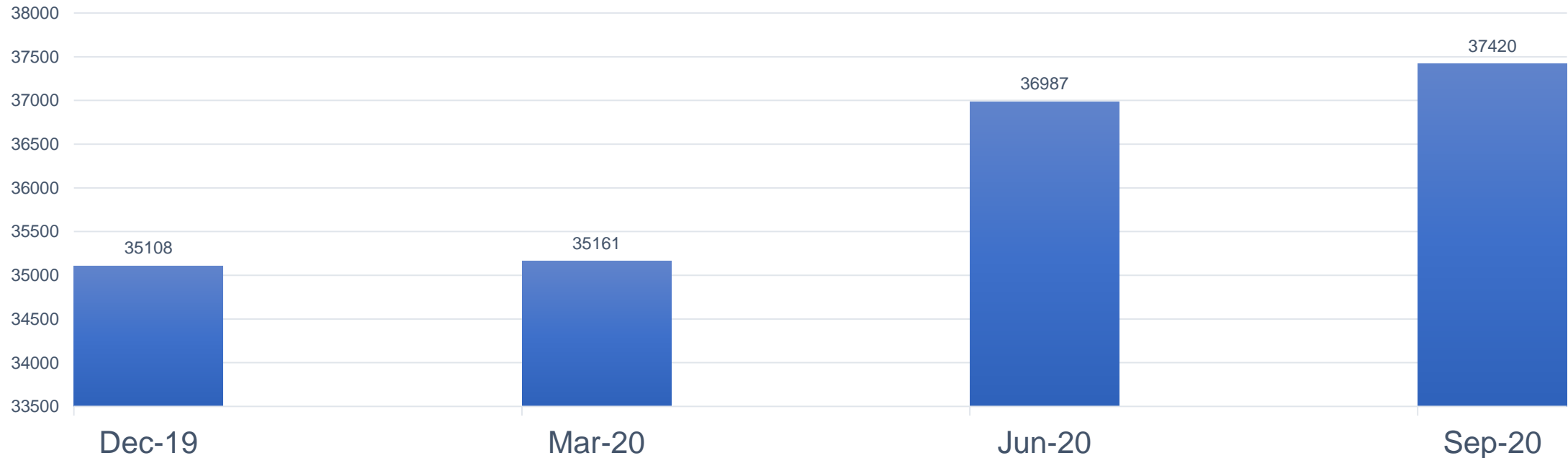
Source: DWP Sept 2020



2. Housing Benefit and Council Tax Reduction



Number of households claiming Housing Benefit or Council Tax Reduction in Tower Hamlets



Source: LIFT Dashboard, Sept 2020

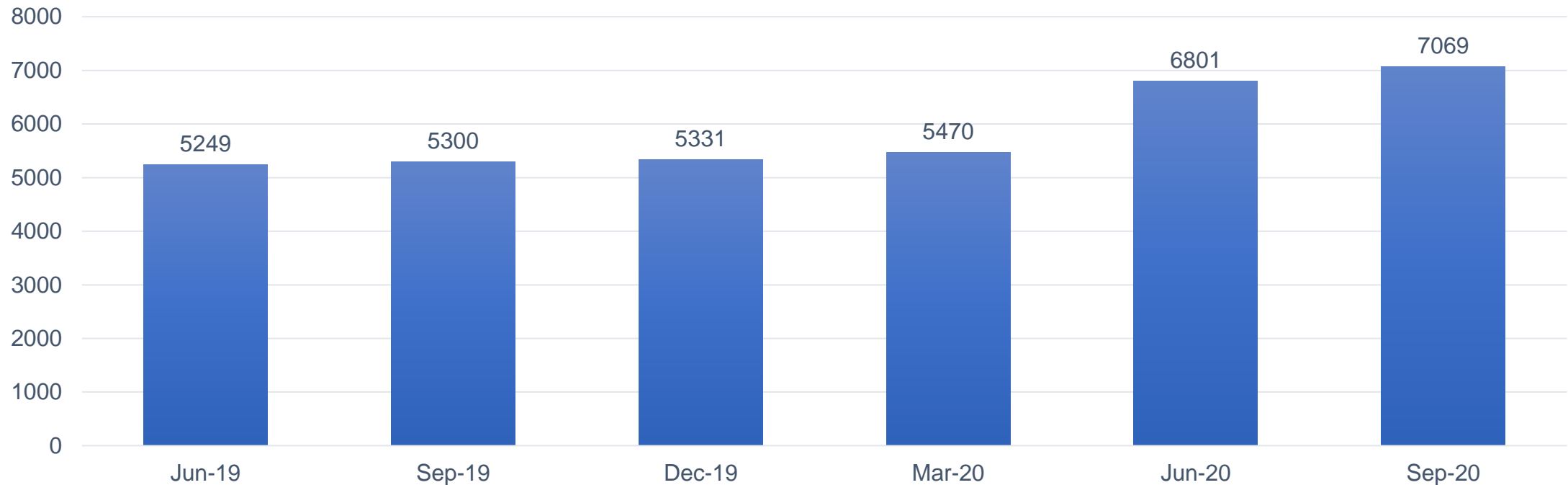


3. Households out of work (with children)



Number of households with children, claiming Housing Benefit or Council Tax Reduction, who are out of work

Page 8



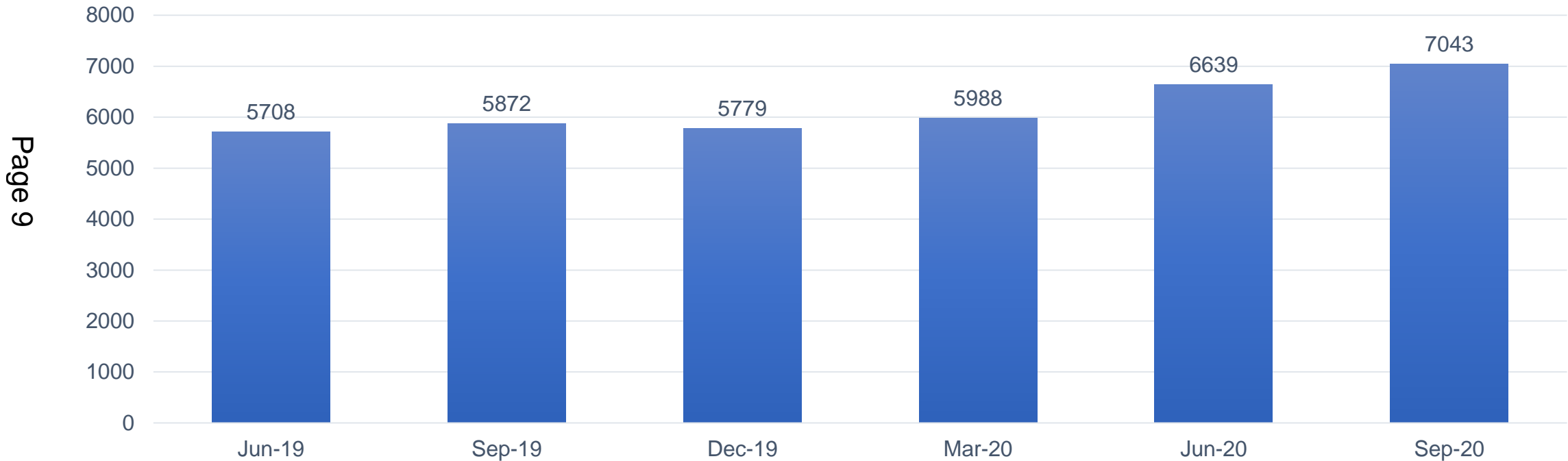
Source: LIFT dashboard (Sept 20)



4. Relative poverty (with children)



Number of households with children, claiming Housing Benefit or Council Tax Reduction, who are living in relative poverty



Source: LIFT dashboard (Sept 20)



5. Arrears – those on HB & CTR



No. of households which are on HB or CTR, and are facing council tax arrears:

June 2020	September 2020
5,419	10,758

Average level of council tax arrears:

June 2020	September 2020
£69	£120

Average level of rent arrears:

June 2020	September 2020
£52	£104



What we're doing



6. Christmas

- Over Christmas, every child eligible and claiming Free School Meals will receive a £25 voucher through their school, for either Tesco or Asda.
- Schools have also been asked to identify those not eligible for FSM but who they are concerned about.
- Vouchers will be provided to 18,600 children.
- This is funded through the DWP Covid Winter Grant.



7. February Half Term



- Funding will also be made available to support this cohort during February half term, although it has not yet been decided whether this will be vouchers or food.
- A meeting has been scheduled in the New Year with Head Teachers from some local schools to discuss what the best approach is for Half Term. This will give time to explore whether vouchers were effective or whether another approach is more suitable.



8. Holiday Activities and Food



- The DfE's Holiday Activities and Food programme, for which Tower Hamlets was a pilot area in 2020, has now been funded across all Local Authorities.
- This means that six weeks of holiday activities will be provided, which the DfE expect to be four in summer, one at Easter and one at Christmas.
- We had 34,506 attendances during summer 2020, and we expect to work with VCS organisations and schools to provide an increased number of places at Easter and for summer 2021.
- Funding allocations for 2021 will be determined by the numbers of FSM-eligible children in the borough, and the programme aims to provide a place for all FSM-eligible children who want one.
- Provision must be 4 hours a day, 4 days per week, and must include physical activity, nutritional education, and at least one meal.



9. VCS Hub



- Since the first lockdown we have been running the VCS food hub, which brings in food items from organisations such as FareShare and The Felix Project, plus other donations, and arranges regular deliveries to VCS organisations in the borough which support families with food.
- We are currently supporting 30 local organisations, including multiple schools and food banks.
- For the week ending 27/11, 7.8 tonnes of food was delivered out to local organisations.



10. Resident Support Scheme



- The Resident Support Scheme provides crisis grants to residents in need of immediate help.
- The key priority groups include families with young children and households with a pregnant person.
- For the duration of the pandemic, the criteria have been relaxed to allow residents to apply for support multiple times in a 12 month period, allowing multiple claims for food and gas/electric.
- The budget has currently been increased from £600k to £950k with additional to come from the covid winter grant



11. Self-isolation payments

- For individuals who have been asked to self-isolate by Test and Trace, some are eligible for a £500 payment. They must:
 - Have been asked to isolate by Test and Trace
 - Be employed or self-employed
 - Be unable to work from home and be in a position where they'd lose income by not working
 - Be currently in receipt of certain benefits
- As of 7th December £237,000 had been paid to 474 households
- The restrictive criteria means this grant cannot be given to households of children who are self isolating



12. Outreach staff



- Our Resident Support Officers have continued to support residents with Universal Credit claims, alongside a broad range of other support. They can be contacted at lbthresidentsupport@towerhamlets.gov.uk
- Meanwhile, we have recently recruited Financial Support Officers to interrogate data and proactively identify households in need of Discretionary Housing Payments and other support. They can be contacted at lbthfinancialsupport@towerhamlets.gov.uk
- These services have continued to operate via the phone during the pandemic.
- The team has also managed requests for food and financial support for those who are self-isolating





THSCP DEC 2020 UPDATES

KEY ACHIEVEMENTS SINCE TRANSITION FROM THE LSCB

- **Appointed Independent Scrutineer;**
 - This new role offers an independent outsiders' perspective to all the work carried out by the partners.
 - The Scrutineer now provides a reflection report to the Executive Meetings.
- **Appointed New Business Manager/ Strategy Manager;**
 - Job description has changed to fit the needs of the new partnership arrangements.
- **Children and Young People Outreach Programme;**
 - The aim of this type of engagement is to ensure children and young people who are 'hard to reach' have their voices heard in the work of the partnership;
 - Each agency will have a nominated 'Canvasser' to liaise with children and young people who they currently work with to gain views and feedback.
 - Alongside this the THSCP Co-Ordinator has formed links with a large range of pre-existing engagement groups though out the partnership.
- **Multi-Agency Data Dashboard;**
 - Data agreements with partners were formed over the summer;
 - The partnership now has a multi-agency data dashboard that is updated quarterly.
 - The following agencies/services make contributions: Children Social Care, Early Help, Youth Services, Police, CCG, Police, GP Care Group, Bart's Health, CDOP. (The partnership will look at expanding the services that contribute and will continuously review the process)
 - This data allows the partnership to monitor safeguarding, view trends and review the impact of work.

KEY ACHIEVEMENTS SINCE TRANSITION FROM THE LSCB - CONTINUED

- **Multi-Agency Audits and Forward Plan**
 - Audits will take place in a workshop style so agencies and partners can have open and honest conversations about where multi-agency work needs to be focused. The aim is to complete four per year and the next two are planned to take place in Feb 2020 and April 2020 which are Adolescent Neglect (triggered by a Local Learning Review) and Exploitation (as a follow on from the VVE strategy)
- **Thematic Review**
 - Troubled Lives Tragic Consequences was a review published in 2015 which explored the lives of children who then were involved in Serious Youth Violence, the author has been re-commissioned to review what has changed in services since then and conduct a large audit on new cases.
- **New Programme of Options for Local Learning Reviews (LLRs)**
 - To ensure that LLRs are timely and focus on implementing change, a wide range of options will now be used to carry these out. The options will be tailored to each individual case.
- **Strengthened Rapid Reviews**
 - Four Rapid Reviews have been held this year, partners have been supplied with more support to share information, and a formal process has been signed off. The Rapid Review takes place, a recommendation is made to the Exec and the Exec have the final decision.
- **Pandemic Response**
 - In March additional Exec meetings were put in place fortnightly until August. These meetings reviewed all the emerging risks that were taking place in agencies and ensured a joint-up response.
- **Strengthened links with other Partnerships**
 - A priority is now joint with the Safeguarding Adults Board;
 - Community Safety Board, Health and Wellbeing Board, Children and Families Board and Born Well Growing Well were all consulted when setting priorities.

SETTING THE PRIORITIES FOR 2021-22

The TH Safeguarding Children Partnership has agreed the new Partnership Priorities. Partnership consultations and feedback events took place during November, which included workshops with practitioners and the wider partnership.

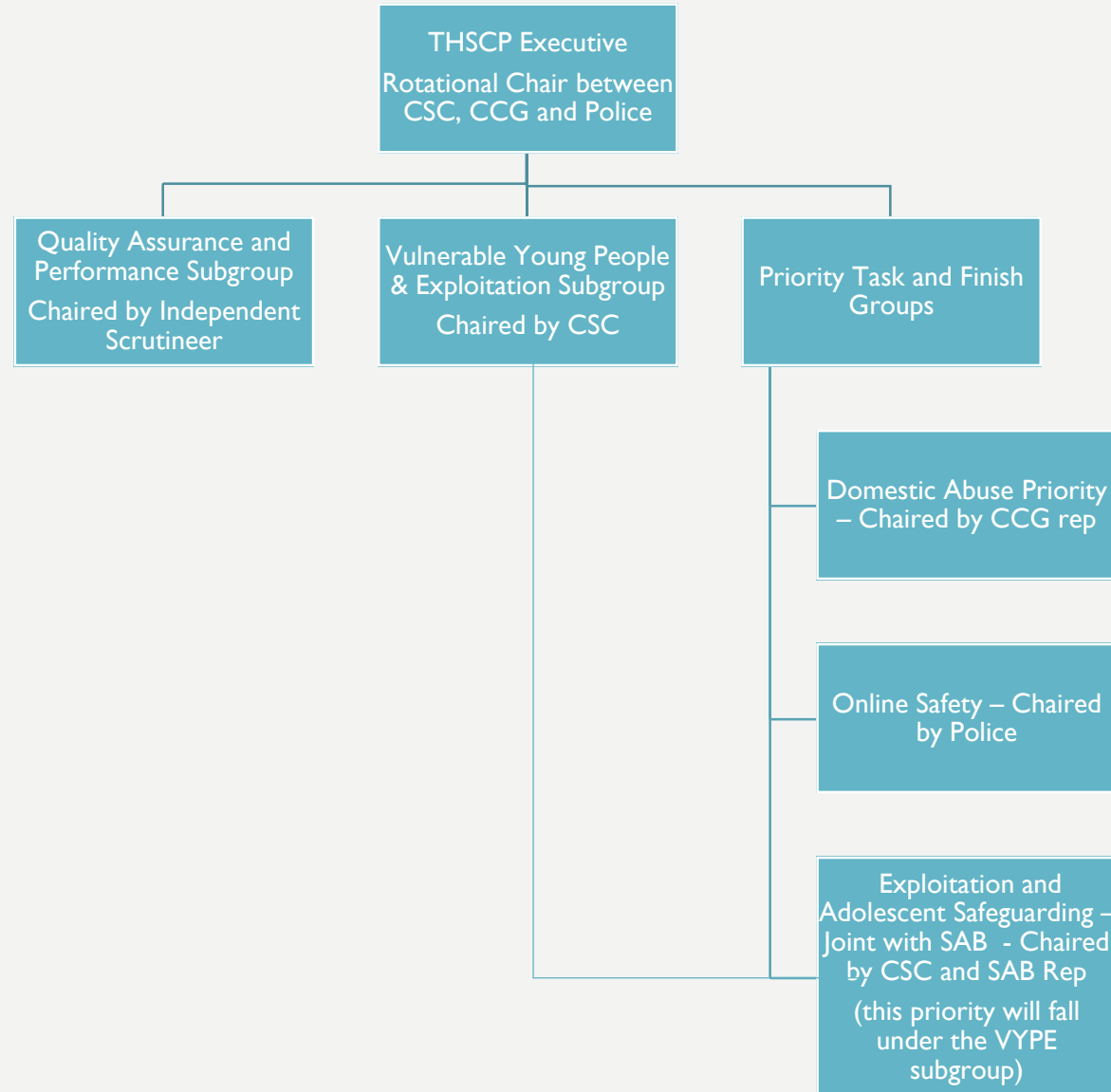
Alongside these events, there were other activities including, engagement with Children and Young People, scrutiny of multi-agency data, review of single agency audits and rapid review outcomes and Independent Scrutineer feedback, to ensure that the priorities for the next financial year address the main safeguarding concerns within the Borough.

Domestic Abuse and
the Impact on Children
and Young People

Staying Safe Online

Exploitation and
Adolescent Safeguarding
*(Joint with Safeguarding
Adults Board)*

STRUCTURE



This page is intentionally left blank